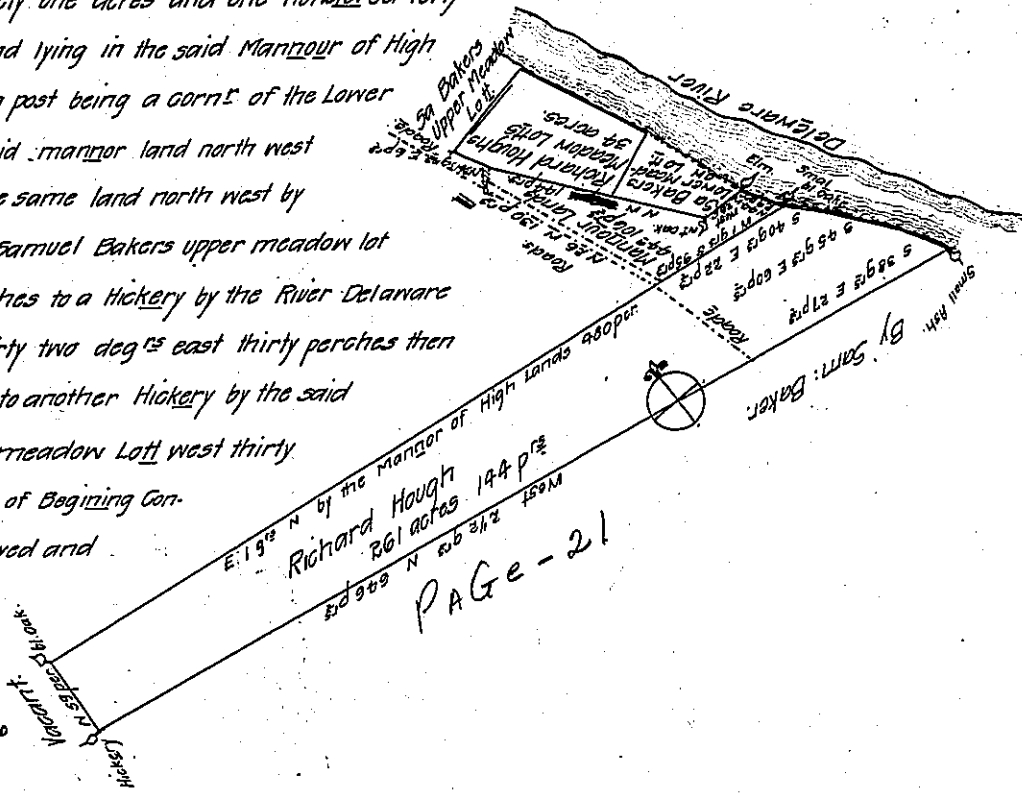


Pursuant to a warrant to me directed by Edward Pennington Surveyor General dated the 9th day of the 11. Month 1709, to lay out or resurvey unto Richard Hough a Tract of lands Situate in the County of Bucks between the Lands of Henry Baker & the Govern^rs Manour of High Lands which Land Begins at Small Ash tree by the side of the River Delaware Thence by Samuel Baker the son of the said Henry his Lands west two deg^s and a half north six hundred forty six perches to a hickery then by vacant lands north fifty nine perches to a black oak standing in the line of the Proprietaries Manour of High Lands Then by the said Manour east one degree north four hundred and eighty perches to a small black oak standing by the said River Delaware Then down the Courses of the said River south forty deg^s east twenty two perches Then south forty five deg^s east sixty perches Then south thirty eight deg^s east Twenty seven perches to the place of Beginning Containeing two hundred sixty one acres and one hundred forty four perches. As also a tract of Meadow Land lying in the said Manour of High Land which said tract of Meadow Begins at a post being a corn^r of the Lower Lot of Sam^l Bakers meadow land Then by the said manour land north west eighty perches and a half to a post Then by the same land north west by north twenty three perches to a post Then by Samuel Bakers upper meadow lot east twenty three deg^s north sixty nine perches to a Hickery by the River Delaware Then down the courses of the River south thirty two deg^s east thirty perches then south twenty eight deg^s east sixty perches to another Hickery by the said River side Then by Samuel Bakers Lower meadow Lot west thirty four deg^s south forty five perches to the place of Beginning Containeing thirty four acres both Tracts Surveyed and Certified the 3 and 4th days of the 3 month 1701.

of Phineas Pemberton.

D 67-16



PAGE - 21

The dotted lines in the draught shows the out lines of this tract here mentioned.

261	144
44	106
34	
<hr/>	
340	250
	90

At the Request of the said Richard Hough to give him an (Obliterated) of land Lying Contiguous to his large Lot & his meadow Lot & to the eastward of Road that Leads up the River Delaware in order to purchase the same from the Proprietarie if he please to sell it I have accordingly layd down the same in the above figures that it may the better be seen how it Lyes it Begins at a small black oak by the River Delaware being the Corn^r of said Houghs land Then up by the River side north forty four deg^s west twenty nine perches to an Elme tree being the Corn^r of Sam^l Bakers Lower meadow lot Then by the same west Twenty six perches and a half to a white oak Then by said Baker & Houghs land one hundred forty four perches to a post Then south forty deg^s west six perches to a — Then south twenty six deg^s east one hundred and thirty perches by the Road side to the said Houghs line of his greater tract Then by the said Houghs line east one deg^s north ninety five perches to the place of Beginning Containeing forty four acres and one hundred and forty four perches (obl)fyed the 9th of the 3 month 1701.

of Phineas Pemberton.

IN TESTIMONY that the above is a copy of the original remaining on file in the Department of Internal Affairs of Pennsylvania, made conformably to an Act of Assembly approved the 16th day of February, 1833, I have hereunto set my Hand and caused the Seal of said Department to be affixed at Harrisburg, this

nineteenth day of November 1910.
Henry Houch
 Secretary of Internal Affairs.